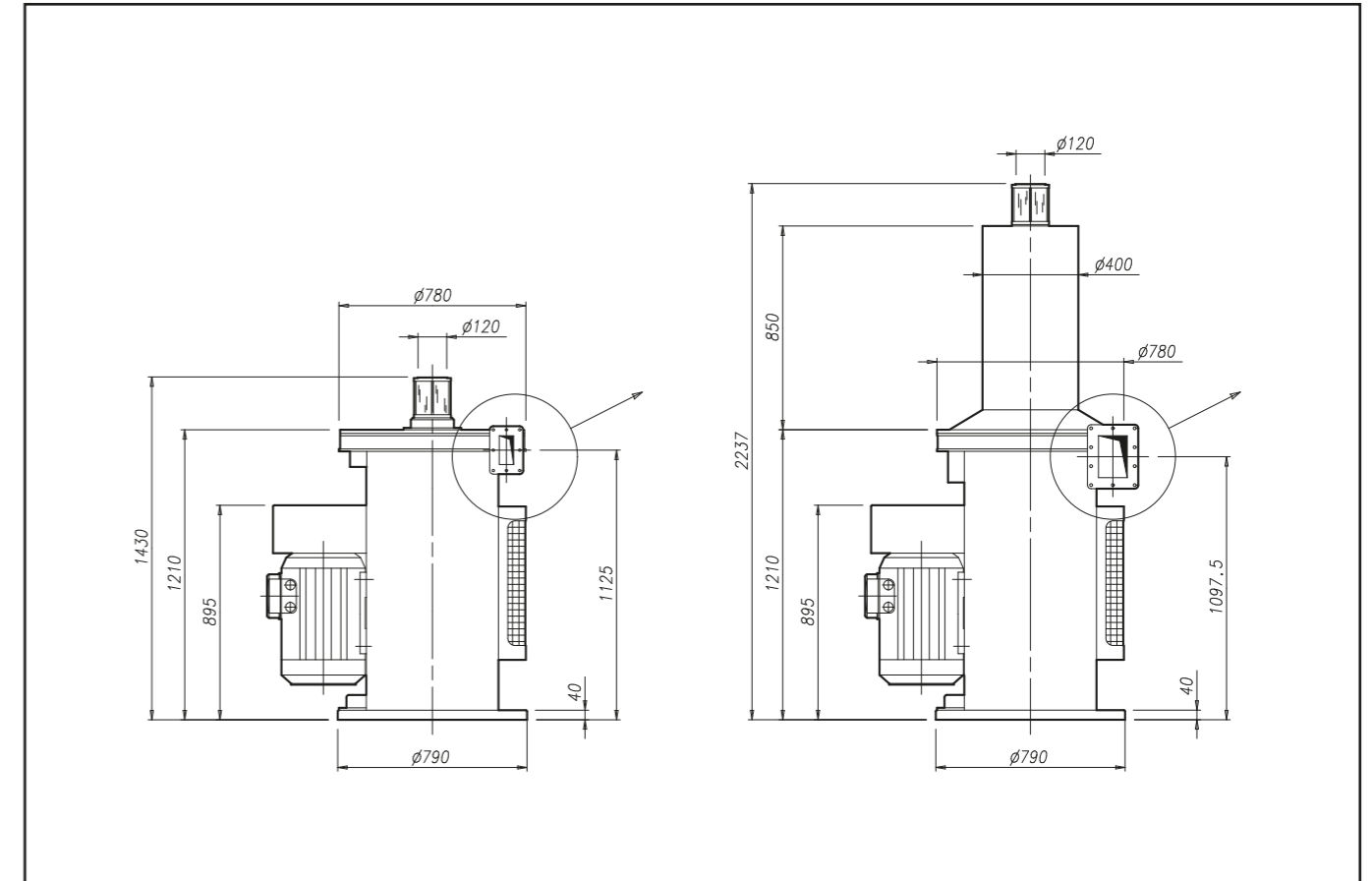
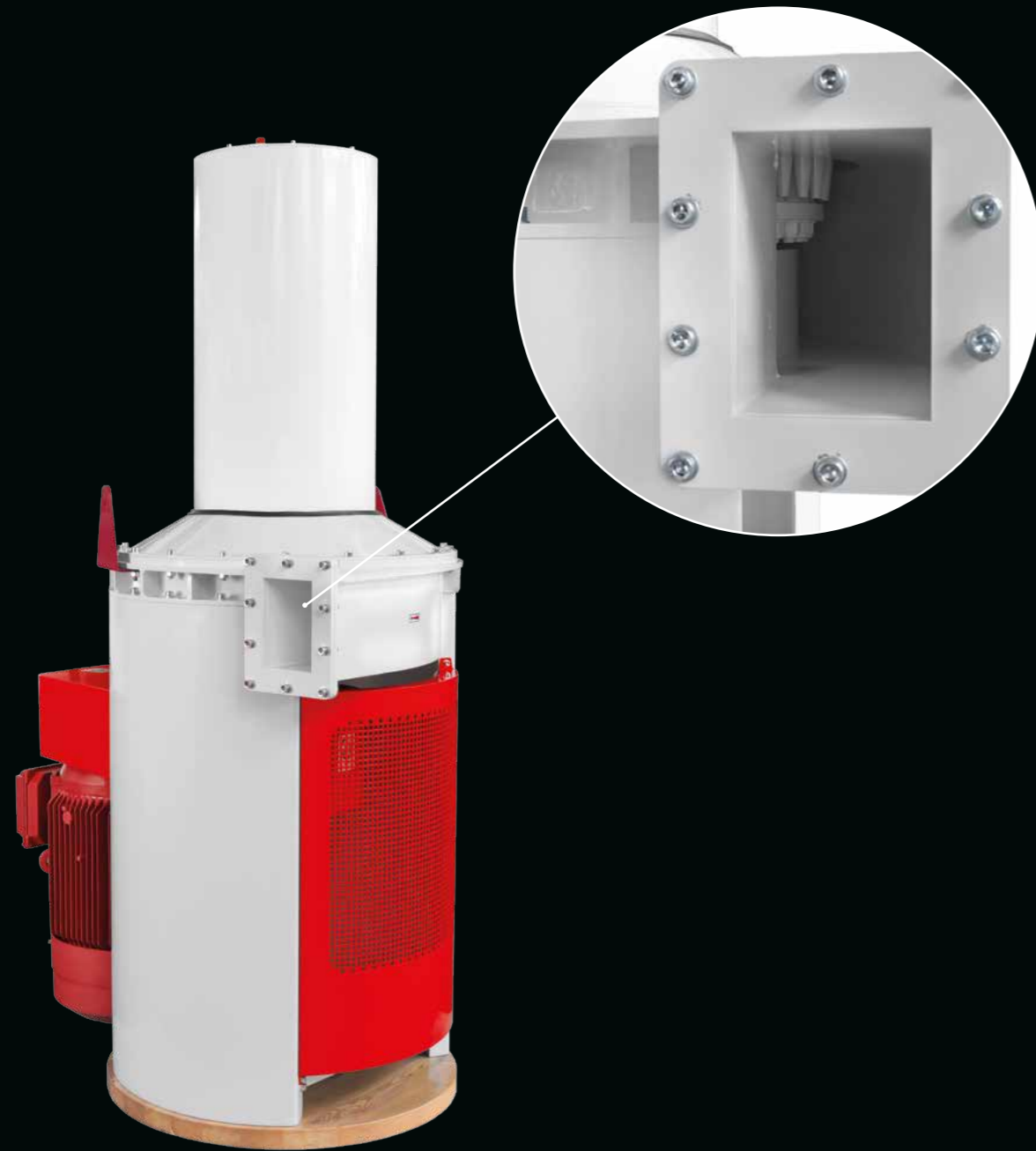


MF-MB

Millishort System

The Millishort System is a technical innovation for the achievement of more compact mills. The system is based on two machines, Milliflour and Millibran, which fully replaces the Rollermill in various passages.



Model	Motor Kw	Capacity T/h		Weight Kg
		3 BK	5 BK	
MB/11	11	2	1,4	530
MB/15	15	2,8	2	550
MB/18,5	18,5	3,5	2,5	560
MB/22	22	4	3	605

Model	Motor Kw	Capacity T/h	Weight Kg
MF/18,5	18,5	1	665
MF/22	22	1,5	685
MF/30	30	2,5	720

Units = mm