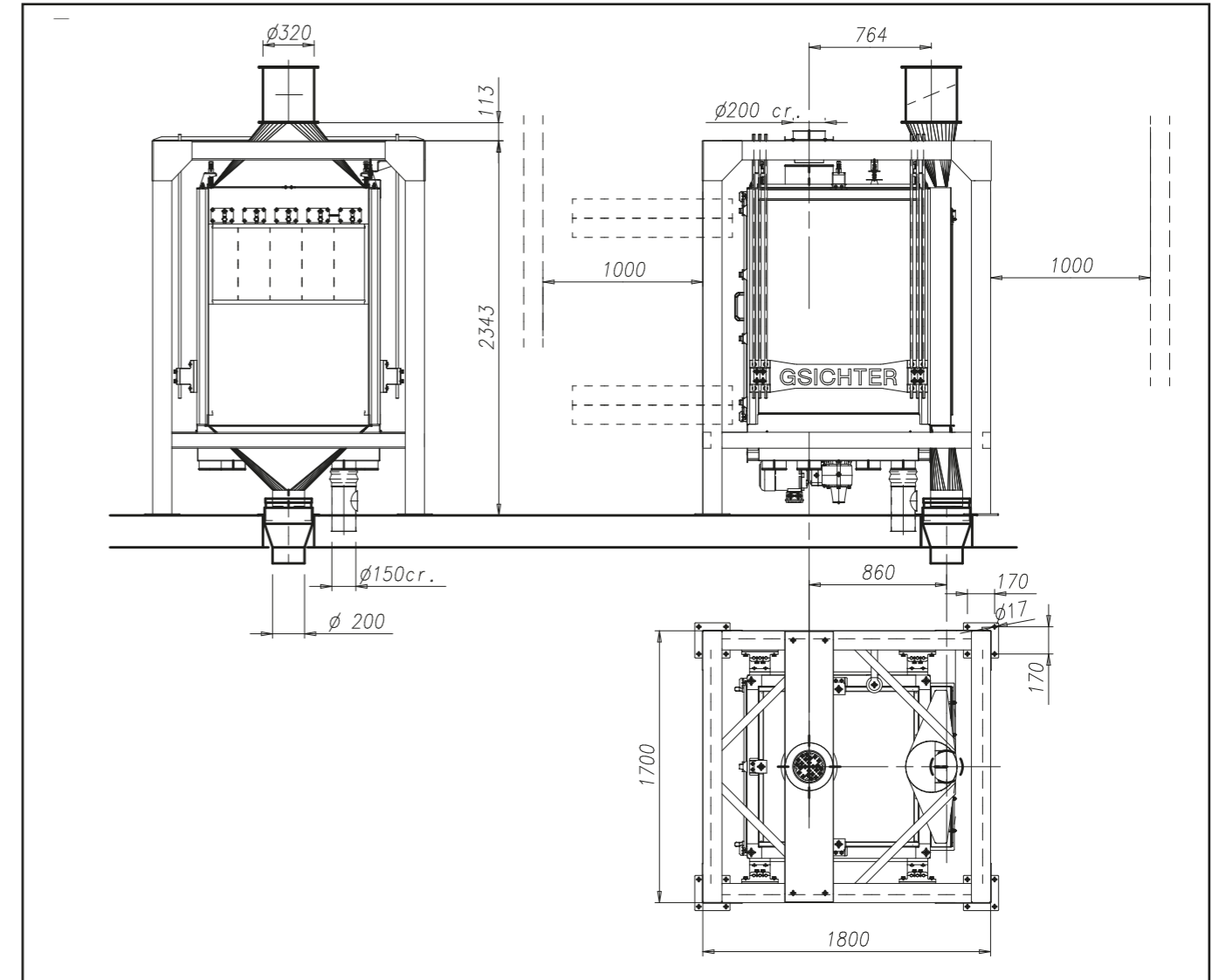


GSICHTER

Plansichter for cereals

Strong metallic construction containing aluminium sieve stacks with 12m² of sifting surface.

- Aspiration channel built-in in the structure of the plansifter;
- Simple system for sieve locking;
- Incorporated motor;
- Fitting sturdy support structure made of section iron resting on the floor.



| Sifting area m ² | * Capacity t/h grano | Power kW | Air consumption m ³ /1' | Weight Kg |
|-----------------------------|----------------------|----------|------------------------------------|-----------|
| 12 | 35 | 2,2 | 80 | 1800 |

* Soft wheat 0,75t/m³
Units = mm